

EVERY YEAR
THOUSANDS
OF DOGS ARE
KILLED
SIMPLY
BECAUSE
THEY ARE
DEAF

The Deaf Dog Education Action Fund is trying to put an end to the misinformation and misconceptions and that surround these dogs. We are working to help find homes for adoptable deaf dogs and to dispel the myths that they are aggressive or hard to train. Please contact us for membership or training information and help save a life!

Share Your Life With A
DEAF DOG
Deaf Dog Education Action Fund • www.deafdogs.org

EVERY YEAR
THOUSANDS
OF DOGS ARE
KILLED
SIMPLY
BECAUSE
THEY ARE
DEAF

The Deaf Dog Education Action Fund is trying to put an end to the misinformation and misconceptions and that surround these dogs. We are working to help find homes for adoptable deaf dogs and to dispel the myths that they are aggressive or hard to train. Please contact us for membership or training information and help save a life!

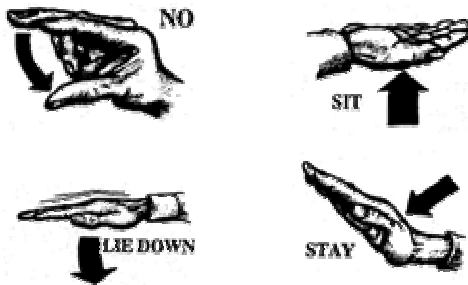
Share Your Life With A
DEAF DOG
Deaf Dog Education Action Fund • www.deafdogs.org

EVERY YEAR
THOUSANDS
OF DOGS ARE
KILLED
SIMPLY
BECAUSE
THEY ARE
DEAF

The Deaf Dog Education Action Fund is trying to put an end to the misinformation and misconceptions and that surround these dogs. We are working to help find homes for adoptable deaf dogs and to dispel the myths that they are aggressive or hard to train. Please contact us for membership or training information and help save a life!

Share Your Life With A
DEAF DOG
Deaf Dog Education Action Fund • www.deafdogs.org

The **Deaf Dog Education Action Fund** is a nonprofit organization dedicated to providing education and funding for the purpose of improving and/or saving the lives of deaf dogs around the world.



From Susan Cope Becker's "Living With A Deaf Dog"

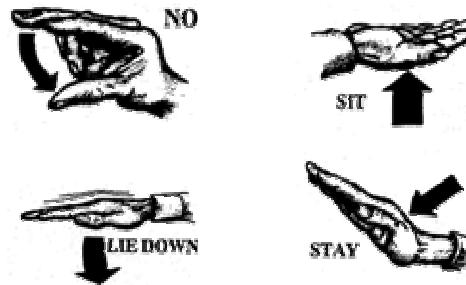
To join the Deaf Dogs E-Mail List, visit:
<http://groups.yahoo.com/group/deafdogs>

Or visit the **DDEAF** Web Site at:
www.deafdogs.org

Our e-mail address is:
ddeaf@deafdogs.org

Letters can also be mailed to:
Deaf Dog Education Action Fund
PO Box 2840, Oneco, FL 34264-2840
U.S.A.

The **Deaf Dog Education Action Fund** is a nonprofit organization dedicated to providing education and funding for the purpose of improving and/or saving the lives of deaf dogs around the world.



From Susan Cope Becker's "Living With A Deaf Dog"

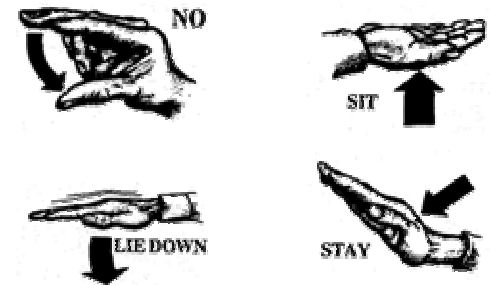
To join the Deaf Dogs E-Mail List, visit:
<http://groups.yahoo.com/group/deafdogs>

Or visit the **DDEAF** Web Site at:
www.deafdogs.org

Our e-mail address is:
ddeaf@deafdogs.org

Letters can also be mailed to:
Deaf Dog Education Action Fund
PO Box 2840, Oneco, FL 34264-2840
U.S.A.

The **Deaf Dog Education Action Fund** is a nonprofit organization dedicated to providing education and funding for the purpose of improving and/or saving the lives of deaf dogs around the world.



From Susan Cope Becker's "Living With A Deaf Dog"

To join the Deaf Dogs E-Mail List, visit:
<http://groups.yahoo.com/group/deafdogs>

Or visit the **DDEAF** Web Site at:
www.deafdogs.org

Our e-mail address is:
ddeaf@deafdogs.org

Letters can also be mailed to:
Deaf Dog Education Action Fund
PO Box 2840, Oneco, FL 34264-2840
U.S.A.